



OWNER'S MANUAL

FOR

CONDITION BACK UP SYSTEM

MODEL: E-2475#1

DO NOT DESTROY

IMPORTANT: Read and understand the entire contents of this manual, with special emphasis on the safety material throughout the manual, before installing, operating, or maintaining this equipment. This equipment and this manual are for use only by persons trained and experienced in the safety operation of welding equipment. Do not allow untrained persons to install, operate or maintain this equipment. Contact your distributor if you do not fully understand this manual.

DAIHEN Corporation WELDING PRODUCTS DIVISION

October 12, 2006

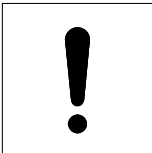


Upon contact, advise MODEL and MANUAL NO.

TABLE OF CONTENTS

| | |
|--|----|
| 1. SAFETY INFORMATION..... | 1 |
| 2. SAFETY PRECAUTIONS..... | 2 |
| 3. PURPOSE OF THIS MACHINE..... | 3 |
| 4. STANDARD COMPOSITION AND ACCESSORIES..... | 4 |
| 5. FUNCTION OF EQUIPMENT..... | 5 |
| 6. TRANSPORTATION AND INSTALLATION..... | 6 |
| 7. COMMUNICATION WITH PERSONAL COMPUTER..... | 7 |
| 8. COMMUNICATION WITH WELDING MACHINE..... | 19 |
| 9. PARTS LIST..... | 26 |
| 10. SPECIFICATIONS..... | 26 |
| 11. SERVICE AND SUPPORT..... | 27 |

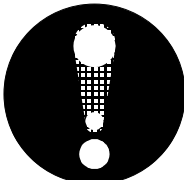
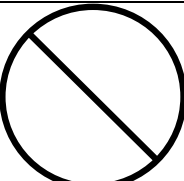
1. SAFETY INFORMATION

- Read and understand this manual, with special emphasis on the safety material throughout the manual, before installing, operating, or maintaining this equipment.
WARNING and CAUTIONS in this manual are the things to use the product safely and prevent harm and the damage beforehand.
- This device considers it is safe enough and designs it, and it is produced, follow WARNING and CAUTIONS of this manual in use by all means. If use the device against the WARNING and CAUTIONS, it reads the demand may result in physical injuries or loss of life.
- If use the device with wrong operation, many kind of harm and the damage are considerable. In this manual, each level is classified to three levels and indicates each symbol and signal. Those symbols and signals of WARNING and CAUTIONS are used for the level of WARNING and CAUTIONS as same meaning.

| Symbol | Signal | MEANING |
|---|--------------|--|
|  | HIGH WARNING | HIGH WARNING gives information regarding possible to occur personal extremely injury that serious condition or loss of life. |
|  | WARNING | WARNING gives information regarding possible to occur personal injury that serious condition or loss of life. |
|  | CAUTIONS | CAUTION gives information regarding possible to occur minor personal injury or material damage. |



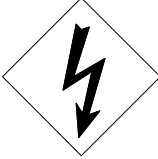


- Symbols show the general case.
- Personal Injury that serious condition means loss of eyesight, an injury, a burn (a high temperature / low temperature), an electric shock, a bone fracture and poisoning, that needing hospitalization and long-term going to hospital to the injury which aftereffects are left and treatment.
Minor personal injury means an injury, a burn and an electric shock, that does not need hospitalization and long-term going to hospital.
Material damage means property and the enlarged damage about damage of machinery.

“Things that must to do” and “Things that is prohibited to do” are following the list.

| | | |
|---|-------------|----------------------------------|
|  | COMPULSION | Things that must to do. |
|  | PROHIBITION | Things that is prohibited to do. |

- Symbols show the general case.

2. SAFETY PRECAUTIONS

| | |
|---|--|
|  WARNING | Observe following to prevent physical injuries. |
| <ul style="list-style-type: none"> ● This device considers it in safety enough and designs it, and it is produced, follow WARNING and CAUTIONS of this manual in use by all means. If use the product against the WARNING and CAUTIONS, it reads the demand may result in physical injuries or loss of life. ● This product should be operated by persons only after reading and understanding contents of this owner' s manual and having knowledge and skills for handling the welding machine safely. ● Do not use this device for except this specification. | |
|  WARNING | Observe the following to prevent electric shock. |
|  | <p>* Do not touch the charging parts; otherwise, you might receive serious electric shock or get burned.</p> |
| <ul style="list-style-type: none"> ● Do not touch the charging parts inside or outside the welding machine. ● Do not use a cable with damage. ● Do not work with wetting hands. ● Turn off the power source when it is out of working. ● Use lifeline when working at the high place. | |
|  CAUTION | Observe the following to prevent breakdown this product or welding machine. |
| <ul style="list-style-type: none"> ● Check for breaks in cables. ● Do not insert no-fuse breaker of welding machine with connecting this device. ● Do not use AC adaptor that is not designated by our company. ● Do not insert USB connector to personal computer with connecting this device to welding machine. | |
|  CAUTION | Observe the following to prevent breakdown this device. |
| <ul style="list-style-type: none"> ● Do not detach the case of this device. ● This device is sensitive to static electricity, please take electrostatic measures enough to use. ● Attach caps (USB connector and DC jack) surely to prevent the damage by a fall shock and an invasion to a case of an alien substance (mine dust, oil) when out of using. | |

3. PURPOSE OF THIS DEVICE

Use this device to back up memories (function or job data) of D series welding machine (or TIG FILLER).

Refer to the following number 1 ~ 6 about general workings.

1. Set up personal computer.
2. Connect this device to personal computer and erase memory in inside of this device.
3. Connect this device to welding machine (or TIG FILLER) and transmit memory of welding machine (or TIG FILLER) to this device.
4. Connect this device to personal computer and preserve memory in this device to personal computer.
5. Connect this device to personal computer and transmit memory file to this device.
6. Connect this device to welding machine (or TIG FILLER) and transmit memory file to welding machine (or TIG FILLER).

* Condition backup system can not be used in the state that software of welding machine (or peripheral device) was left in inside memory of this device. Erasing memory in inside of this device is necessary.

4. STANDARD COMPOSITION AND ACCESSORIES

4.1 Standard composition

This device consists of main body of software installer and accessory that showing in 4.2 and optional accessories that showing in 4.3.

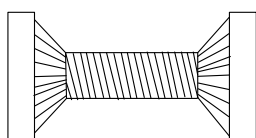


↑ Main body of software installer

4.2 Accessory

● Check the amount when opening.

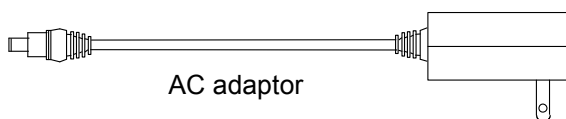
| Name | Specification | Q'ty | Remarks |
|-------|---------------|------|---------|
| Cable | E2475D00 | 1 | |



Cable
E2475D00

4.3 Optional accessories

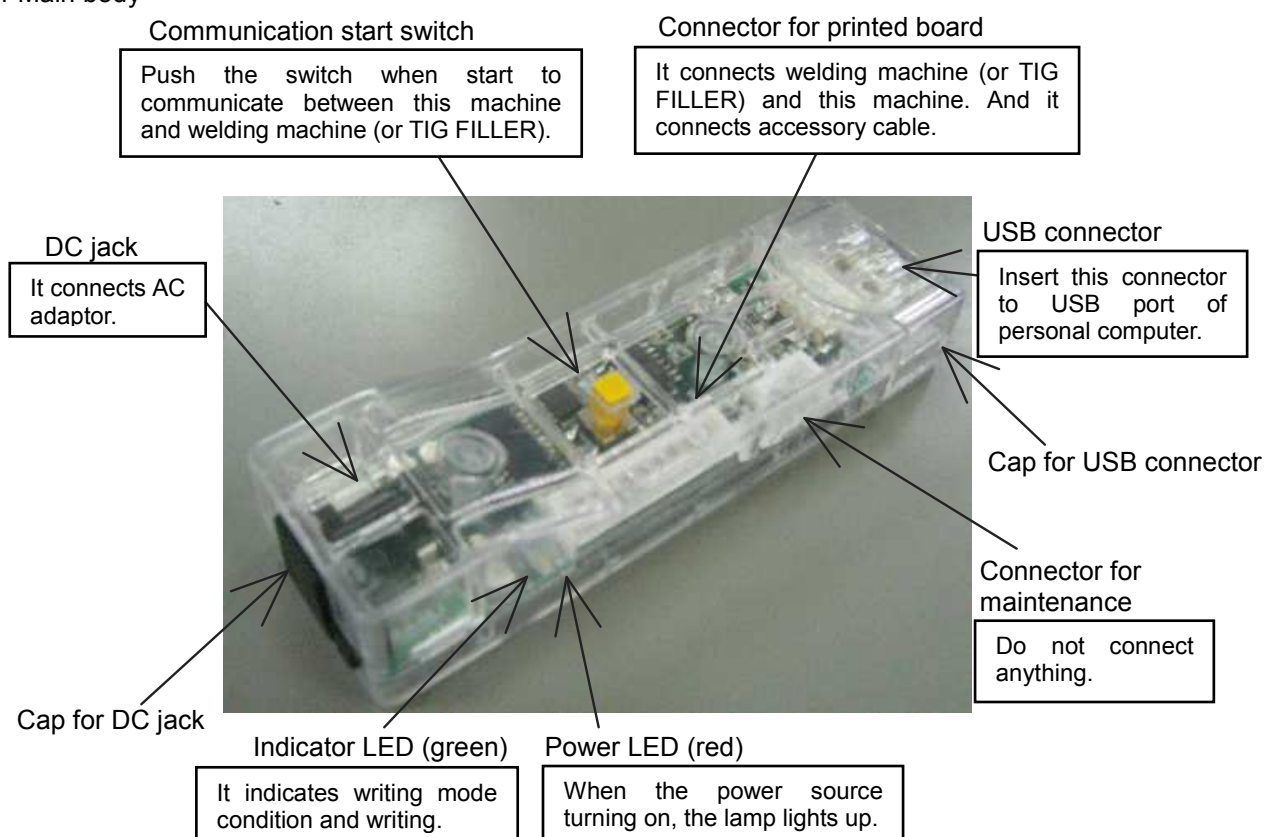
| Name | Specification | Q'ty | Remarks |
|------------|---------------|------|--|
| CD-ROM | E2475E00 | 1 | Manual E2475#1 Personal computer program (MEMORY SAVER SYSTEM) |
| AC adaptor | E2475F00 | 1 | |



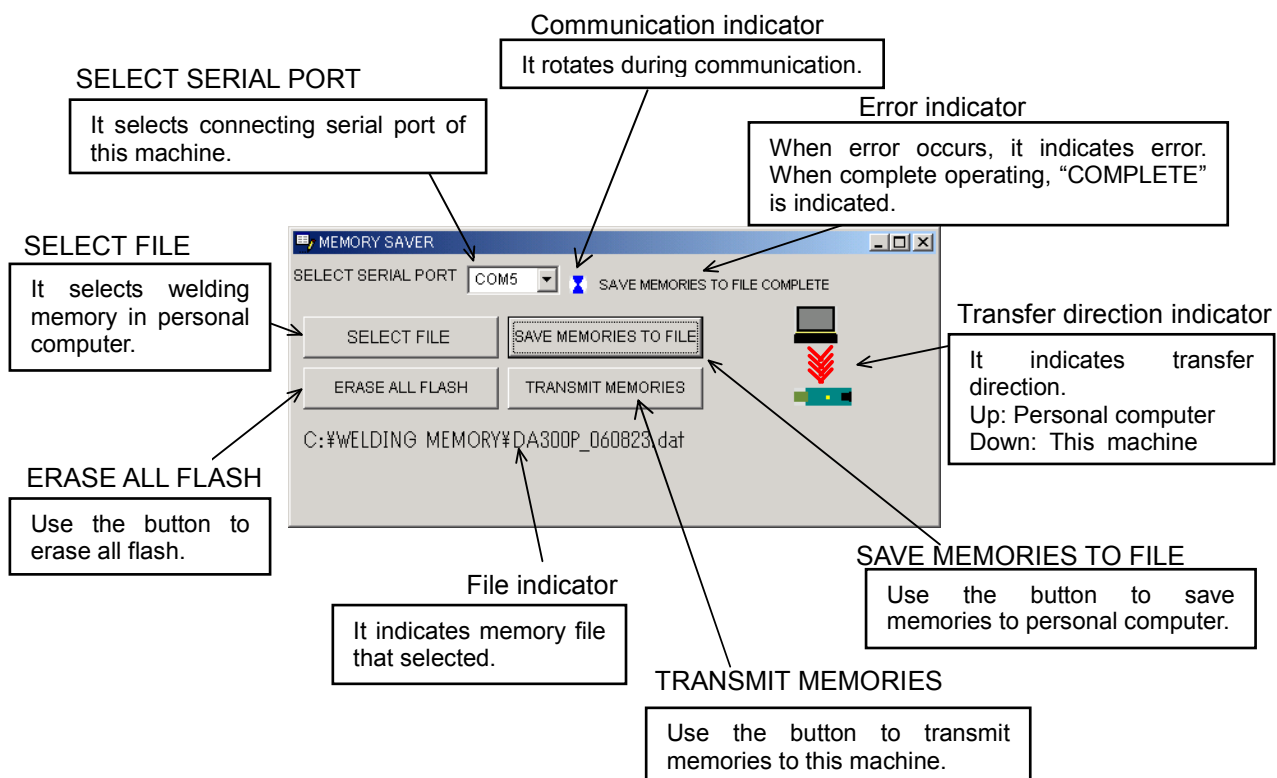
AC adaptor

5. FUNCTION OF EQUIPMENT

5.1 Main body




5.2 Picture of personal computer




6. TRANSPORTATION AND INSTALLATION


6.1 Transportation

| |
|--|
|  CAUTION |
| Observe the following during transportation, |
| <ul style="list-style-type: none">● Be sure to turn off the switch when carrying the welding machine.● Be sure to attach case or cap (USB connector and DC jack) certainly when carrying the welding machine. |

6.2 Installation

| |
|---|
|  CAUTION |
| Observe the following about installation. |
| <ul style="list-style-type: none">● Do not expose the welding machine to direct sunlight or rain.● Case is not sealed so do not use a place with the fear that an alien substance (dust or oil) invades in a case.● Do not use near the place of welding machine that high frequency of arc start is occurring.● Use a place of ambient temperature is 0~40°C. |

7. COMMUNICATION WITH PERSONAL COMPUTER

| <div style="text-align: center;">  CAUTION </div> |
|---|
| Observe the following to prevent trouble of this device. |
| ● Do not connect this device to welding machine (or TIG FILLER) with inserting to USB port of personal computer. And do not attach AC adaptor. |

USE DOS/V type of personal computer that includes OS of WindowsXP/2000.

7.1 Install driver software

Install driver software to personal computer is necessary to connect this device to personal computer and to operate. Install driver software from home page of our company,

["http://www.daihen.co.jp/yosetsu/saver/saver_e.html"](http://www.daihen.co.jp/yosetsu/saver/saver_e.html) or from CD-ROM that is sold separately.

Who request the latest driver software, download VCP (Virtual COM port) driver for WindowsXP/2000 of FT232BM from homepage of FTDI, ["http://www.ftdichip.com"](http://www.ftdichip.com).

7.2 Connection of this device and personal computer

Insert this device to USB port of personal computer like following picture.

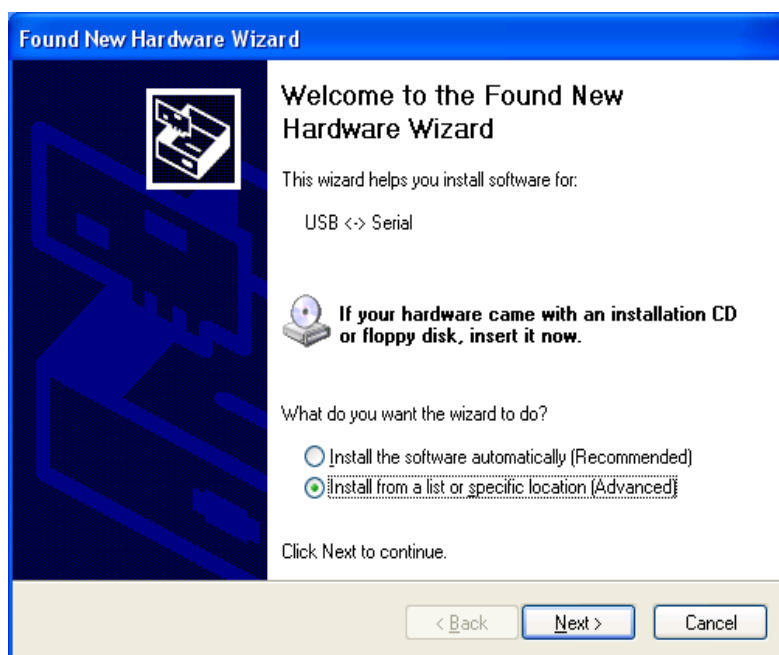


If it is inserted correctly, power LED (red) of this device lights up.

7.3 Install driver software

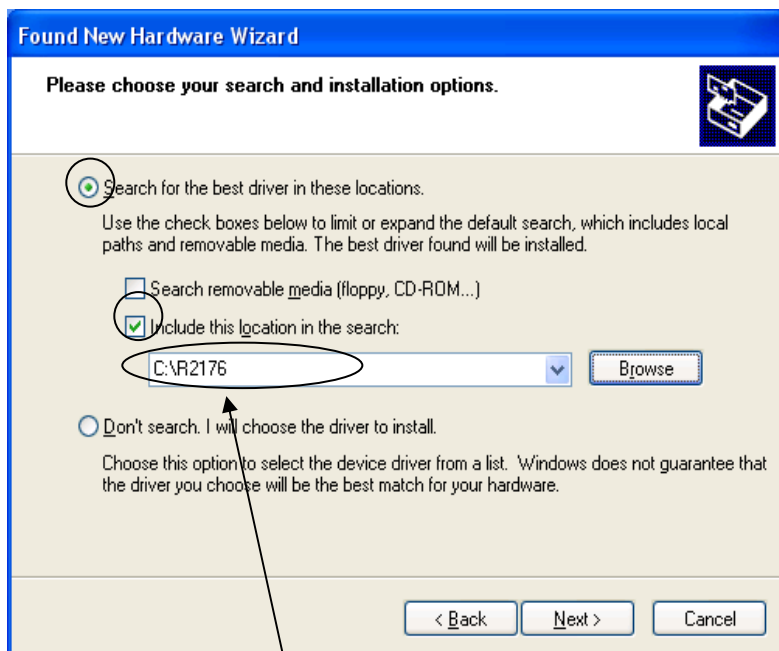
* Display is changed according to version of Windows. Following pictures are case of Windows XP.

(1) Check [Install from a list of specific location] then click [Next].



7. COMMUNICATION WITH PERSONAL COMPUTER (continued)

- (2) Check [Search for the best driver in these locations] and [Include this location in the search] then refer to driver software folder. Click [Next].



Driver software folder

- (3) Click [Finish].

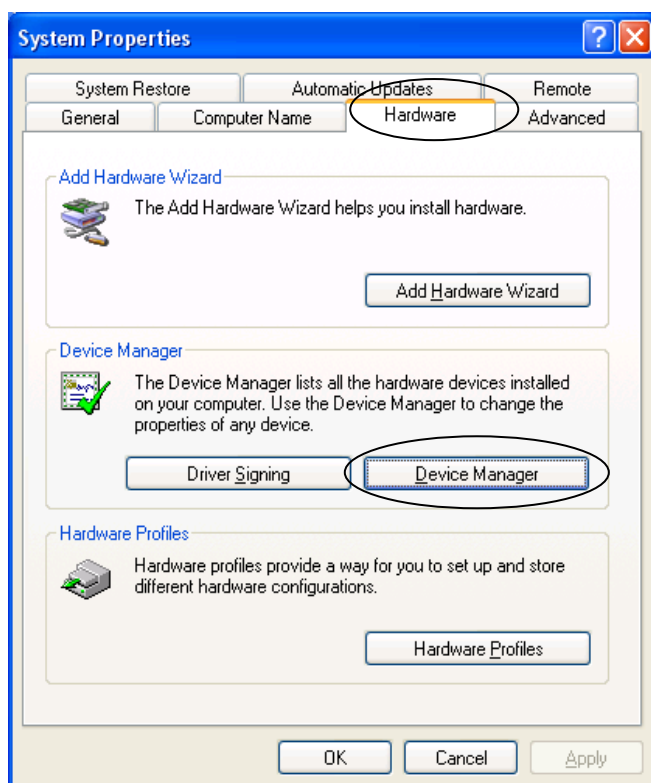


- (4) Carry out working (1) (2) (3) again.

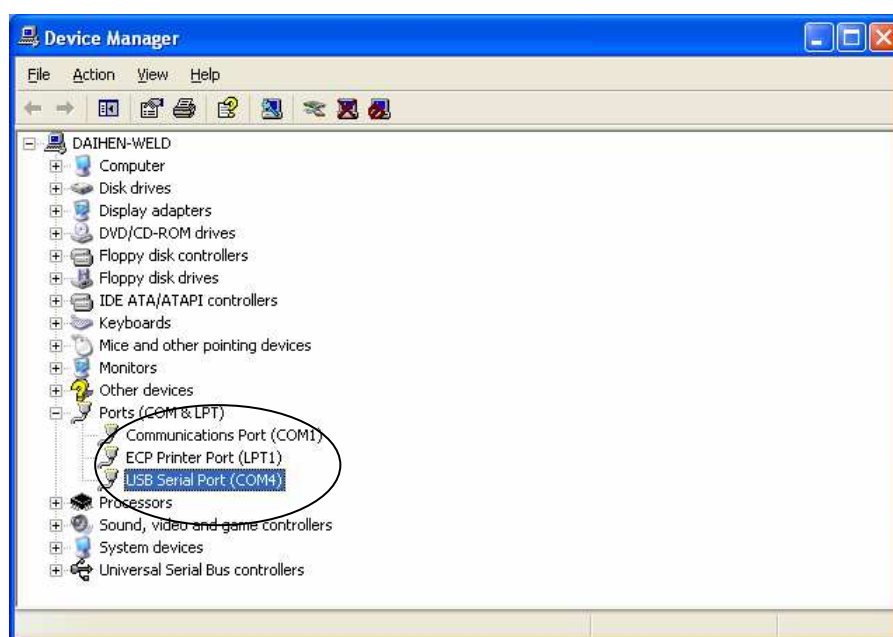
7. COMMUNICATION WITH PERSONAL COMPUTER (continued)

7.4 Confirmation of serial port number

- (1) Right click [My Computer] and click [Property] that is indicated. Click [Hardware] tab then click [Device Manager] tab.



- (2) Double click [Port (COM and LPT)] and [USB Serial Port (COM?)] is indicated. (Serial port number is COM4 on this display.)



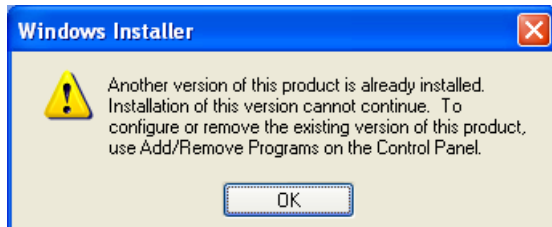
* If change USB port that connect this device and personal computer, new serial port number is assigned. In this case confirm serial port number with operation above again.

7. COMMUNICATION WITH PERSONAL COMPUTER (continued)

7.5 Install MEMORY SAVER SYSTEM

Install MEMORY SAVER SYSTEM is necessary to use this device.

- (1) Uninstall old version if old version is still installed. Refer to 7.6 about uninstall. If trying to install new version without uninstall old version, error in the picture below is indicated.



* When check version of MEMORY SAVER SYSTEM that is installing now, indicate display of addition and deletion and check it on [MEMORY SAVER SYSTEM E2475E Ver???]. (Refer to 7.6 (2)).

- (2) Double click "http://www.daihen.co.jp/yosetsu/saver/saver_e.html" on home page of our company, or installer "setup.exe" of MEMORY SAVER SYSTEM that installed from CD-ROM.

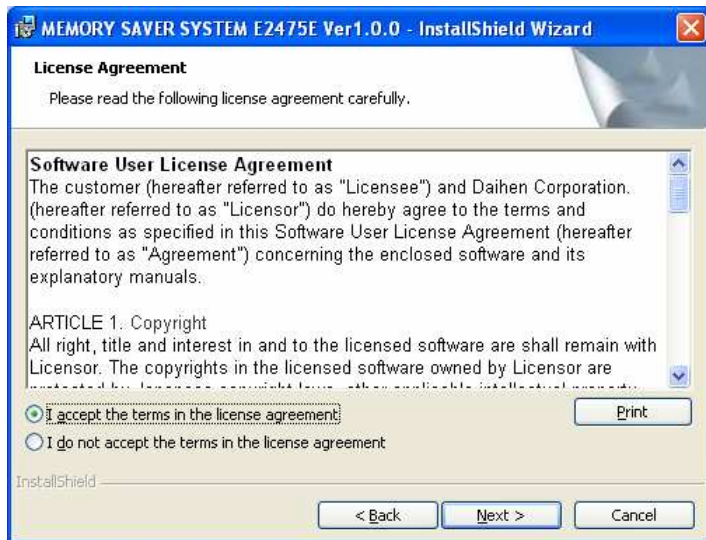
* If using CD-ROM, double click "setup.exe" in "¥English¥Setup" folder.

- (3) Click [Next] after picture in below is indicated.

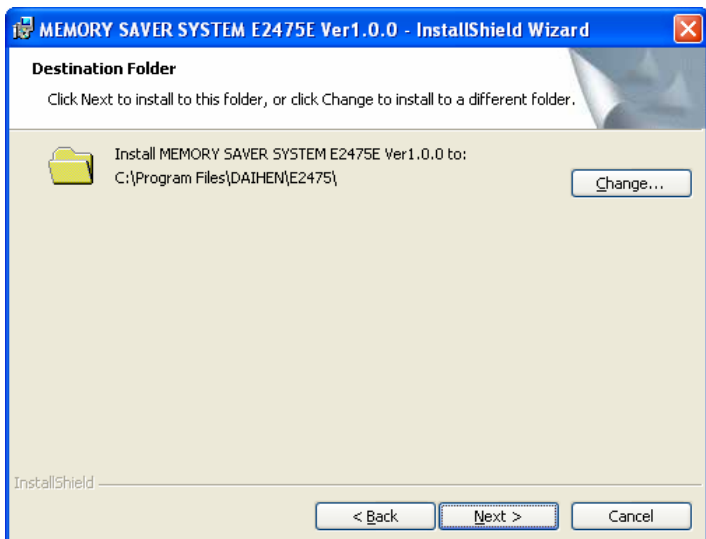


7. COMMUNICATION WITH PERSONAL COMPUTER (continued)

- (4) After reading contents of licensing agreement, click [I accept the terms in the license agreement] then click [Next].

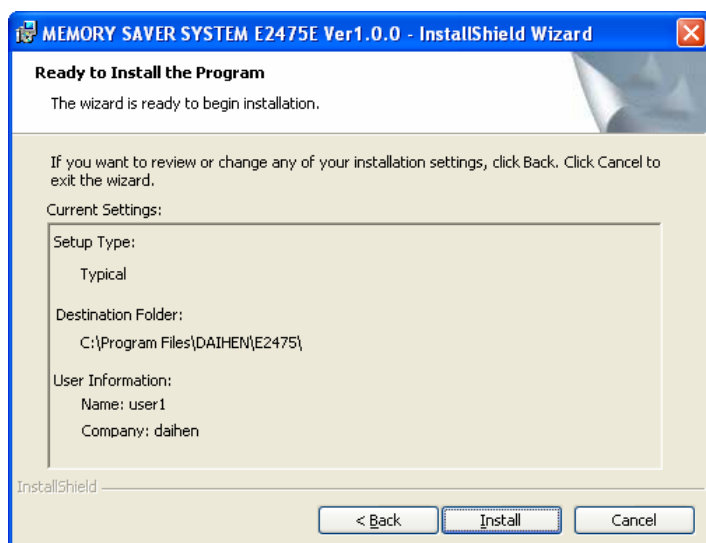


- (5) Select folder that to install and click [Next].



7. COMMUNICATION WITH PERSONAL COMPUTER (continued)

(6) Click [Install].



(7) Click [Finish].

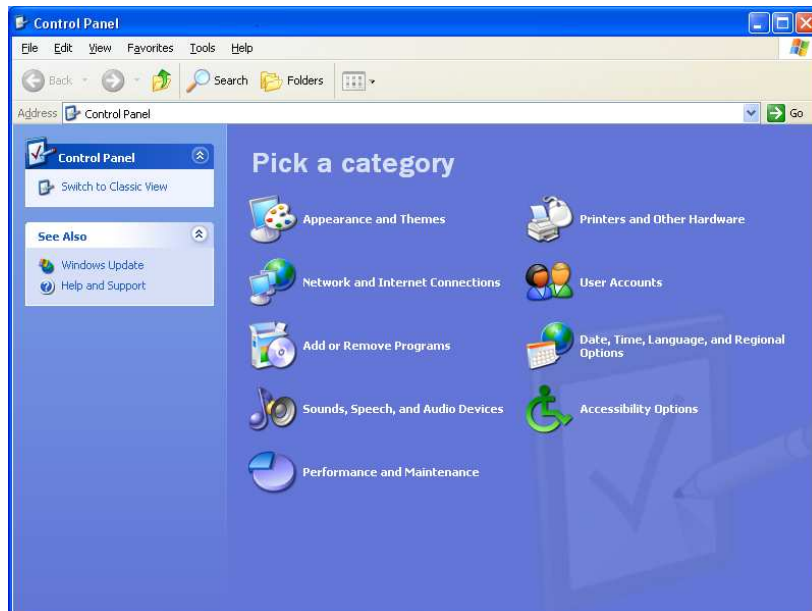


7. COMMUNICATION WITH PERSONAL COMPUTER (continued)

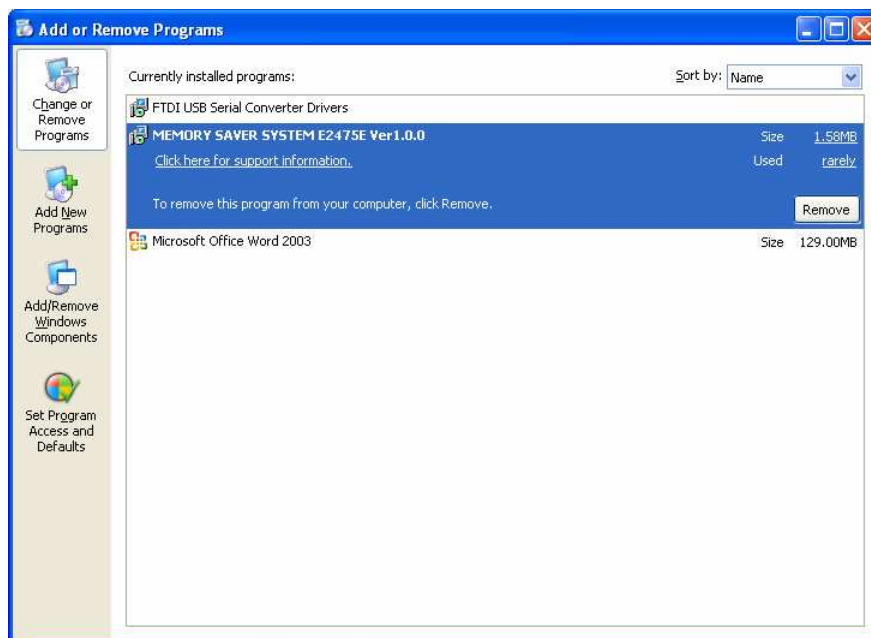
7.6 Uninstall MEMORY SAVER SYSTEM

* Display is changed according to version of Windows. Picture in below is case of Windows XP.

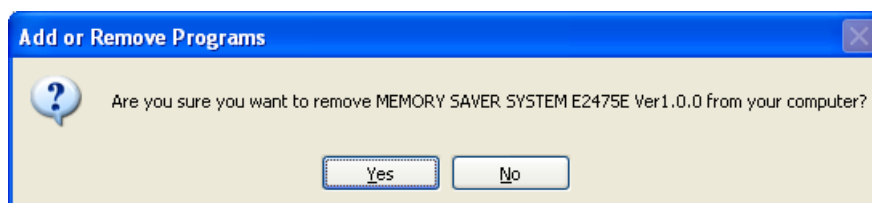
- (1) Click [Control Panel] and picture in below is indicated. Then double click [Add or Remove Programs].



- (2) Display turns to addition and erasing of program then select [MEMORY SAVER SYSTEM E2475E Ver ???] and click [Remove].



- (3) Click [Yes].



7. COMMUNICATION WITH PERSONAL COMPUTER (continued)

7.7 Operation of MEMORY SAVER SYSTEM

Connect this device to personal computer with referring 7.2 and up MEMORY SAVER SYSTEM.
Operation of MEMORY SAVER SYSTEM on the display is following pictures.

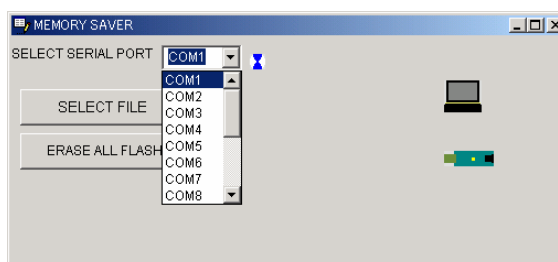
NOTE:

Do not carry out other operation on Windows during communicating between this machine and personal computer.

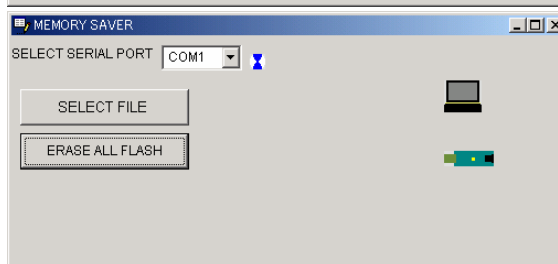
- (1) Erase memory in this device. (Turn to usable condition back up system.)

* Condition back up system can not be used if software of welding machine (or peripheral device) is still left in the memory.

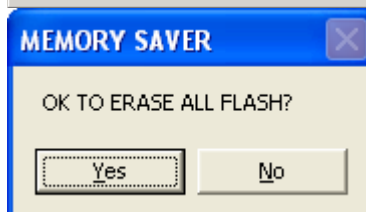
1. Click the button [▼] that is on the right side of COM1 and select serial port connecting this device that was confirmed in 7.4.



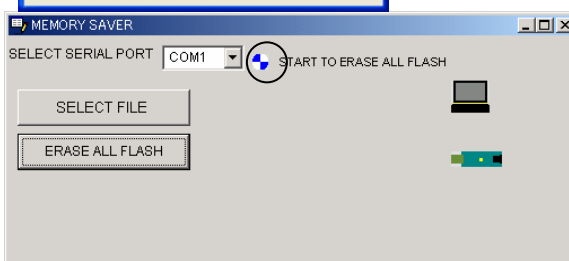
2. Click [ERASE ALL FLASH].



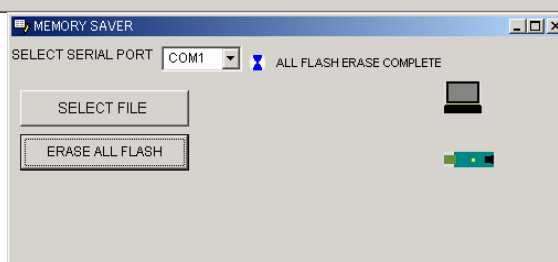
3. Click [Yes].
If stopping operation, click [No].



4. Communication indicator rotates during communication.



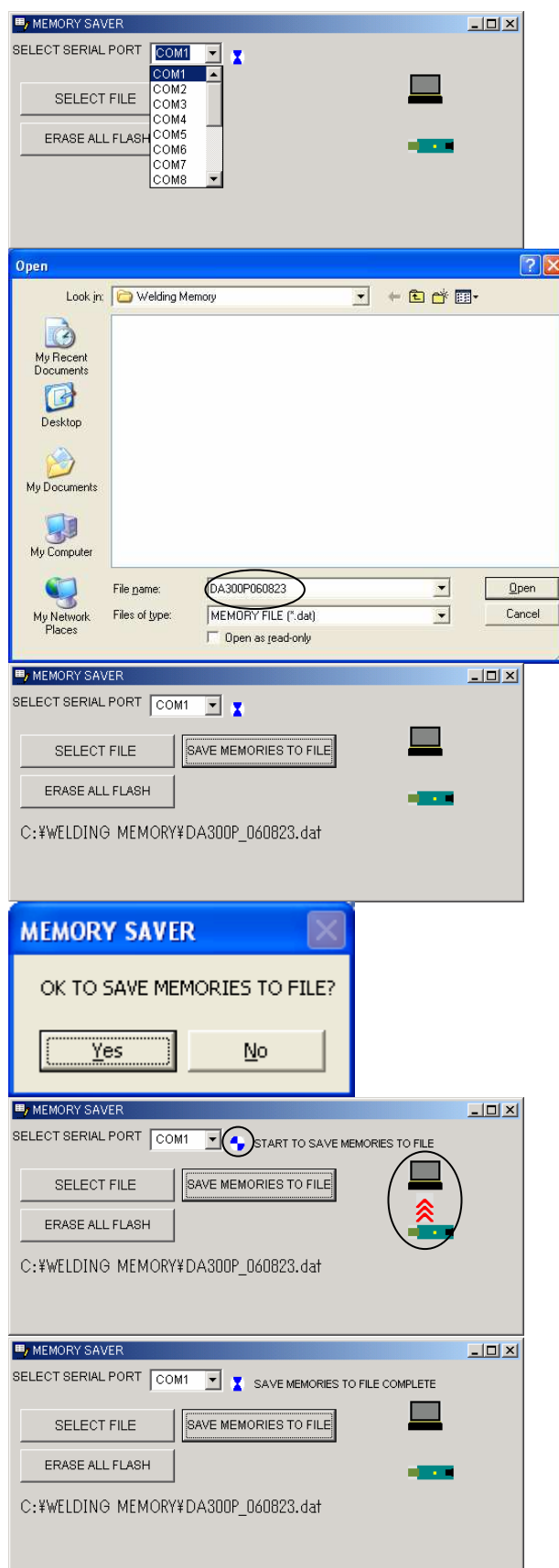
5. If operation is concluded correctly, [ERASE ALL FLASH COMPLETE] is indicated like the picture.
If error occurs, error is indicated.
Refer to 7.8 when error is indicated.



7. COMMUNICATION WITH PERSONAL COMPUTER (continued)

(2) Save memory in this device to personal computer

1. Click the button [▼] that is on the right side of COM1 and select serial port connecting this device that was confirmed in 7.4
2. Click [SELECT FILE] and the picture on the right is indicated. (Display is changed according to version of Windows)
Input suitable memory file name (do not input extension) and click [Open].
3. Then display changes like on the right and file name and [SAVE MEMORIES TO FILE] is indicated.
Click [SAVE MEMORIES TO FILE].
4. Click [Yes].
If stopping operation, click [No].
5. Communication indicator rotates during communication, and transmit direction (from this device to personal computer) is indicated.
6. If operation is concluded correctly [SAVE MEMORIES TO FILE COMPLETE] is indicated on the picture. And memory in this device is erased automatically.
If error occurs, error is indicated.
Refer to 7.8 when error is indicated.

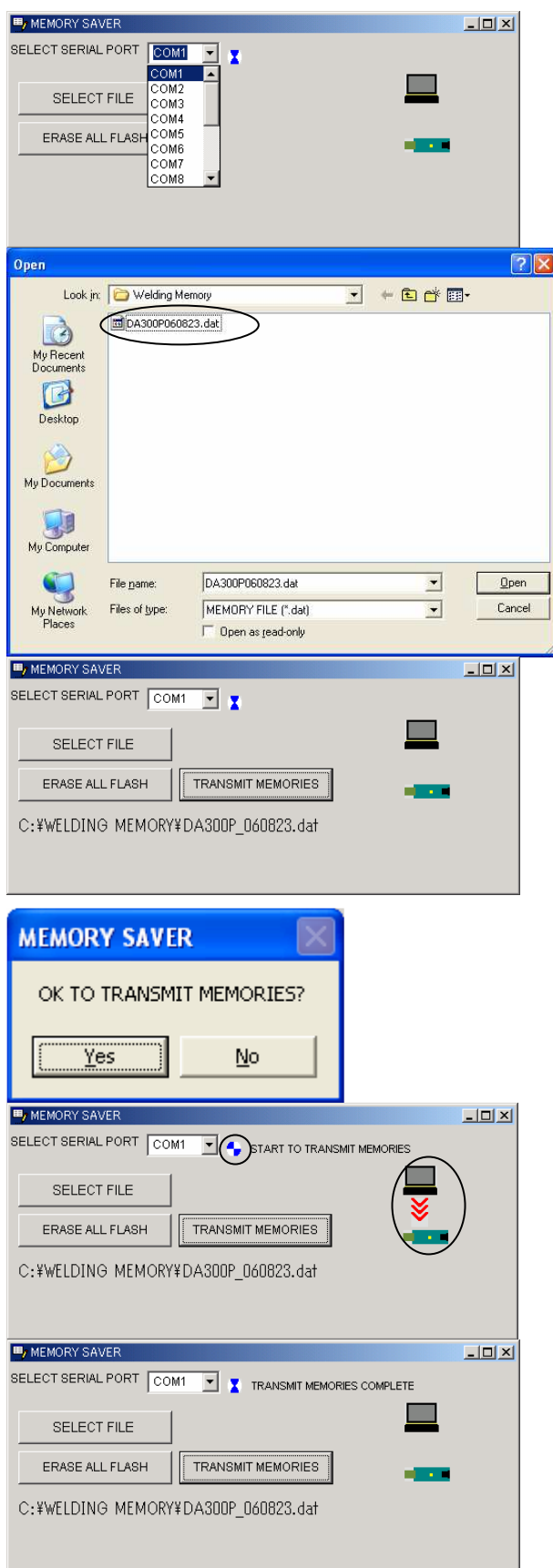


7. COMMUNICATION WITH PERSONAL COMPUTER (continued)

- (3) Transmit memory that saved in personal computer to this device

* If memory is saved in this device, memory can not be transmitted and [FULL MEMORY ERROR] is indicated. Carry out 7.7 (1) or (2).

1. Click [▼] on the right side of COM1 and select serial port number that is confirmed in 7.4.
2. Click [SELECT FILE] and picture like on the right is indicated. (Display is changed according to version of Windows.)
Select file from saved memories and click [Open].
3. Then display changes like on the right, file name that is selected and [TRANSMIT MEMORIES] button are indicated.
Click [TRANSMIT MEMORIES].
But if select memory that contents is changed, [TRANSMIT MEMORIES] button is not indicated and [SAVE MEMORIESTO FILE] is indicated instead.
In this case, select another memory file.
4. Click [Yes].
If stopping operation, click [No].
5. Communication indicator rotates during communication and transmit direction (from personal computer to this device) is indicated.
6. If operation is concluded correctly, [TRANSMIT MEMORIES COMPLETE] is indicated like picture on the right
If error occurs, error is indicated.
Refer to 7.8 when error is indicated.



7. COMMUNICATION WITH PERSONAL COMPUTER (continued)

7.8 If error is indicated on the display of MEMORY SAVER SYSTEM

If error occurs during communication personal computer with this device, stop communication and error is indicated on the display of personal computer. Measures methods for each error are showing below.

■ **[INSTALLER ERROR]** is indicated

Condition of internal this device is abnormal. Take up MEMORY SAVER SYSTEM and this device again and carry out operation.

■ **[COMMUNICATION ERROR]** is indicated

Communication is abnormal and memory is not transmitted correctly. Check that this device is connects to personal computer and selection of serial port is correct, then carry out again. If same error occurs again, take up MEMORY SAVER SYSTEM and this device again then carry out operation.

If this device and personal computer are not compatible, this error is possible to indicate. In this time, use other personal computer.

■ **[VERIFY ERROR]** is indicated

Memory is this device is possible to have any trouble. Take up MEMORY SAVER SYSTEM and this device again then carry out operation.

■ **[INSTALLER MODE ERROR]** is indicated

Software of welding machine (or peripheral device) is still in the memory of this device so condition back up system can not be used. Carry out 7.7 (1) and erase the memory of this device.

■ **[NO MEMORY ERROR]** is indicated

- This error occurs when saving memory from this device to personal computer.
... Memory is not saved in this device.
- This error occurs when transmitting memory to this device.
... Contents of memory file are changed.

■ **[FULL MEMORY ERROR]** is indicated

Memory file can not be transmitted to this device because memory has already saved in this device. Carry out 7.7 (1) or (2).

This error occurs only when transmitting memory to this device.

Same error occurs again in spite of carry out above measures methods, any troubles in the device is considerable. In this case, inform to distributor.

7. COMMUNICATION WITH PERSONAL COMPUTER (continued)

* Following error occurs if selection of serial port is incorrect.

- Connect other USB serial exchange cable to personal computer and select applicable COM number
... [COMMUNICATION ERROR] is indicated
- Use personal computer with serial port I/O and select applicable COM number (COM1 in ordinary).
... [COMMUNICATION ERROR] is indicated
- Mistake of selection serial port number
... Forced end MEMORY SAVE SYSTEM by injustice of port number

* If changing contents of memory, following error occurs according to changing contents. It is recommended to set not to change memory on personal computer.

- In spite of selecting memory, [TRANSMIT MEMORIES] is not indicated but [SAVE MEMORIES TO FILE] is indicated.
- [NO MEMORY ERROR] is indicated.
- MEMORY SAVE SYSTEM ends with force.


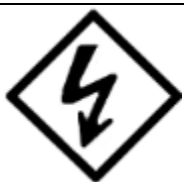
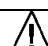
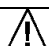
NOTE:

Memory in personal computer is possible to destroy if error occurs during 7.7 (2). Erase memory file. After error occurring, take up MEMORY SAVE SYSTEM and this device again if using continuously.

NOTE:

Memory in personal computer is possible to destroy if error occurs during 7.7 (3). Do not transmit memory from this machine to welding machine (or TIG filler) after error occurring. Take up MEMORY SAVE SYSTEM and this machine again then carry out 7.7 (1) and erase memory.

8. COMMUNICATION WITH WELDING MACHINE

|  WARNING | |
|---|---|
|  | <p>Follow the instructions below to avoid electric shock.</p> |
| <ul style="list-style-type: none"> ● Do not touch the charging parts inside or outside the welding machine. ● Do not use a cable with a damaged. ● Do not work with wetting hands. ● Be sure to turn off the power source when do not use the device. | |
|  CAUTION | |
| <p>Follow the instructions below to prevent trouble of welding machine.</p> | |
| <ul style="list-style-type: none"> ● Check for breaks in cables. ● Do not insert no-fuse breaker with connecting this device. ● Do not use adaptor that is not designated by distributor. ● Do not insert USB connector to personal computer with connecting this device to welding machine. | |
|  CAUTION | |
| <ul style="list-style-type: none"> ● Welding condition data that memorized by welding condition memory function has possible to change and erase according to operation of this device. Be sure to memory important data. ● We shall not assume any responsibility for any change or loss of data resulting from operation. | |

8.1 Operation

- (1) Turn off no fuse breaker if connecting input cable of welding machine. Do not insert no-fuse breaker with connecting this device.

(2-1) How connect with welding machine

1. Detach screws (6P) on the front panel of welding machine.



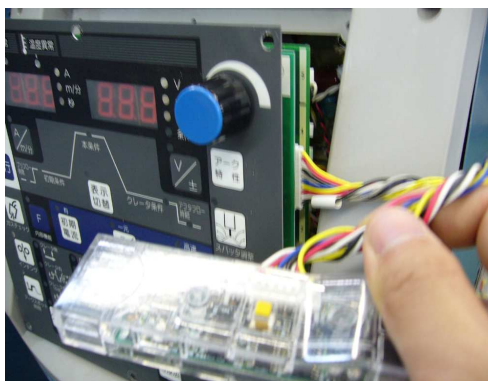
8. COMMUNICATION WITH WELDING MACHINE (continued)

(2-1) How connect with welding machine (continued)

2. Pull the front panel to the front side.
In this time, take care for not to take of cables from connector.



3. Connect cables to CN5 of printed board PxxxxxP (xxxxx is changed by each model of machine).
Carry out connecting and taking off carefully.



(2-2) How to connect with TIG filler (HC-71D)

1. Detach screws (4P) on the front panel of HC-71D.



8. COMMUNICATION WITH WELDING MACHINE (continued)

(2-2) How to connect with TIG filler (HC-71D) (continued)

2. Pull the front panel to the front side.
In this time, take care for not to take of cables from connector.



3. Connect cables to CN5 of printed board E2448P. Carry out connecting and taking off carefully.



- (3) After connection of cables and printed board is completed, attach AC adaptor to this device and turn on the power. Turn on the power and power LED (red) lights up. If the lamp does not light, following cause is considerable.

- AC100V~240V is not deeded to receptacle that is inserted power source plug.
- AC adaptor or this device has any trouble.

Power LED does not light in spite of AC100V~240V is feeding, inform to distributor about it.

*WARNING "E-100" is flashing on the panel, it is not a problem.

- (4) Push the communication start switch with power source on. Communication mode ([Transmit memory from welding machine to this device] or [Transmit memory from this device to welding machine]) is selected by time length of turning on the start switch. Refer to Table 1. about details.
Indicator LED (green) flash slowly during communication. If communication is completed correctly, indicator LED (green) turns off. If indicator LED (green) flashes high speed during communication, refer to 8.2.

8. COMMUNICATION WITH WELDING MACHINE (continued)

Table 1. Communication mode

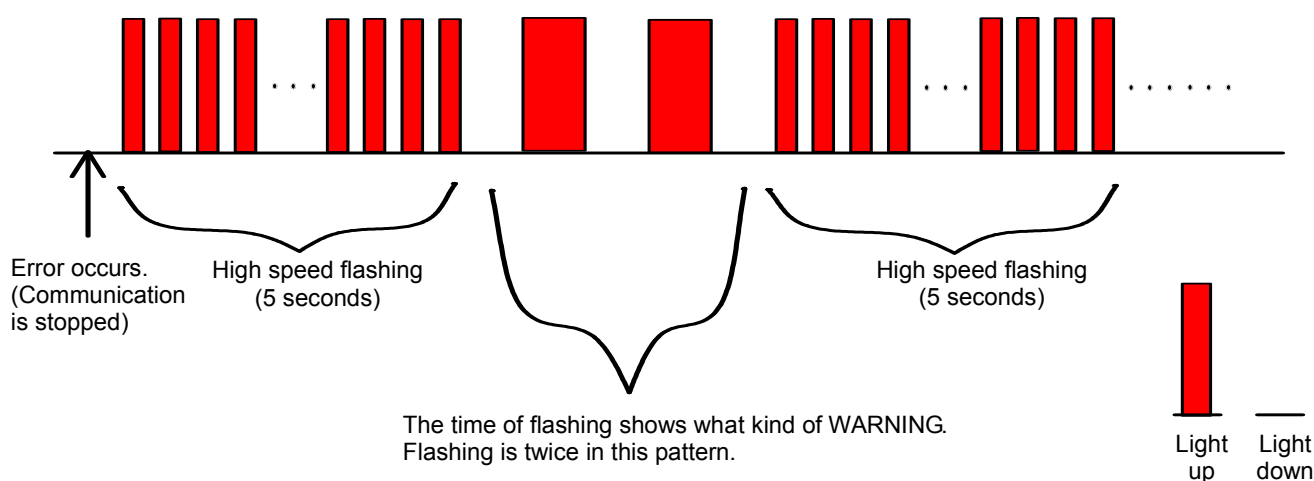
| | Time length of pushing communication start switch | Indication of LED (green) during communication |
|--|---|--|
| Mode 1 (Transmit memory from welding machine to this device) | 0.3 ~ 3.0seconds (Start communication a point of time to detach switch.) | Flash 0.5 seconds |
| Mode 2 (Transmit memory from this device to welding machine) | More than 3.0 seconds (Start communication a point of time passed 3.0 seconds) | Flash 1.0 seconds |

* If memory is saved in this device, carry out 7.7 (1) or (2) and erase memory.

- (5) Detach this device from welding machine and return to normal condition. Take off cables carefully.

8.2 Error is indicated on indicator LED (green)

Error occurs when welding machine (or TIG filler) and this device is communicating, communication is stopped and indicator LED (green) flashes high speed 5 seconds. This high speed flashing occurs intermittent. Indicator LED (green) flashes slowly between each high speed flashing. Time of the flashing shows what kind of error. Pattern of flashing is below.



Measures method for each error according to flashing counts of indicator LED (green) are following in the below. Communication start switch is not useable during error is indicating so turn off the power of this device after distinction error.

Table 2 Error indication

| | LED flashes once | LED flashes twice | LED flashes three times | LED flashes four times | LED flashes five times | Not completed |
|-------|------------------------|---|----------------------------|---------------------------|---------------------------|--------------------------|
| | Error (1) | Error (2) | Error (3) | Error (4) | Error (5) | Error (6) |
| Error | Error of model | <ul style="list-style-type: none"> Error of saving memory Error of non-saving Memory Error of non-correspondence for back up | Communication error 1 | Error of printed board | Error of installer | Communication error 2 |

8. COMMUNICATION WITH WELDING MACHINE (continued)

■ **ERROR (1)** Indicator LED (green) flashes at once: Error of model
Model of software in this device and welding machine (or TIG filler) is not same. Check that model is correct. Error (1) is indicated in spite of model is correct, refer to next page *1.

- **ERROR (2)** Indicator LED (green) flashes twice : Error of saving memory
: Error of non-saving memory
: Error of non- correspondence for back up
- This error occurs during communicate with Mode 1
...Error of saving memory and non-correspondence for back up
Memory has already saved in this device so memory can not be transmitted to this device.Or welding machine (or TIG filler) is non-saving for back up system.
 - This error occurs during communicate with Mode 2
...Error of non-saving memory and non-correspondence for back up Memory is not saved in this device. Or welding machine (or TIG filler) is non-saving for back up system.

If distinguish which error it is, start communication with same mode as mode that error occurs with detaching this device from welding machine (or TIG filler).

- When ERROR (2) occurs ... Error of saving memory and non-saving memory
- When ERROR (3) occurs ... Error of non-correspondence for back up

When error of saving memory occurs, carry out 7.7 (1) or (2) and erase memory.

When error of non-correspondence for back up occurs, check that software version of welding machine (or TIG filler) is in Table 3. or it is older than version in Table 3. Applicable welding machine (or TIG filler) can not use condition back up system.

In spite of there is no problem as above and same error occurs again, refer to next page *1.

Table 3. Software version that non-correspondence for condition back up system

| Form | Model | Software version |
|--------|---------------------|-----------------------|
| P10263 | DT-300P | P10263 Ver014.000.000 |
| K4883 | DT-300P | K4883 Ver001.000.000 |
| K4889 | DT-300P | K4889 Ver002.100.000 |
| K7013 | DT-300P | K7013 Ver001.100.000 |
| K7030 | DT-300P | K7030 Ver001.000.000 |
| K7033 | DT-300P | K7033 Ver001.000.000 |
| P10334 | DT-300P | P10334 Ver005.000.000 |
| K4864 | DT-300P | K4864 Ver001.000.000 |
| K7009 | DT-300P | K7009 Ver001.000.000 |
| P10333 | DT-315P | P10333 Ver003.200.000 |
| P10260 | DM-350 | P10260 Ver003.000.000 |
| E2448 | TIG filler (HC-71D) | E2448 Ver003.100 |
| E2464 | TIG filler (HC-71D) | E2464 Ver002.100 |

* Version that older than version in the table does not use condition back up system.

8. COMMUNICATION WITH WELDING MACHINE (continued)

■ **ERROR (3)** Indicator LED (green) flashes three times : Communication error 1

It is communication error between this device and welding machine (or TIG filler). Detach cable between this device and welding machine (or TIG filler) at once and connect again then carry out. Same error occurs in spite of cable is connected again, following cause are considerable.

■ **ERROR (4)** Indicator LED (green) flashes four times: Error of printed board

This error occurs when printed board of welding machine (or TIG filler) is broken down. Detach cable between this device and welding machine (or TIG filler) at once and connect again then carry out writing. Nonetheless same error occurs, refer to *1.

■ **ERROR (5)** Indicator LED (green) flashes five times: Error of installer

This error occurs when this device is broken down. Detach cable between this device and welding machine (or TIG filler) at once and connect again then carry out. Nonetheless same error occurs, refer to *1.

■ **ERROR (6)** Indicator LED (green) keeps flashing over 30 seconds (writing is not completed)
: Communication error 2

This error is communication error between this device and welding machine (or TIG filler). Detach cable between this device and welding machine (or TIG filler) and connect again then carry out. Inform to distributor if same error occurs again.

***1 It is possible to indicate ERROR (1) (2) (4) (5) in spite of there is no other problem because of incorrect transmitting by poor contact of cables. If error is not solved with above measures, detach cable between this device and welding machine (or TIG filler) at once and connect again then carry out. Nonetheless same error occurs again, inform to distributor about details.**

NOTE:

Error occurs during communication with Mode 1, memory in this machine is possible to destroy. In this case, carry out 7.7 (1) and erase memory.

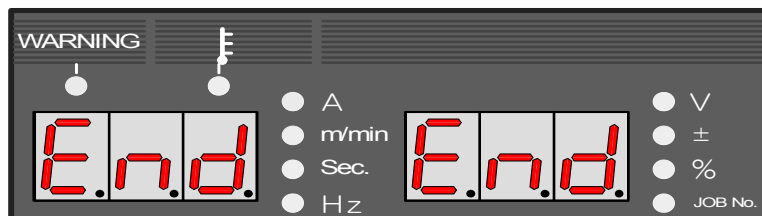
8. COMMUNICATION WITH WELDING MACHINE (continued)

NOTE:

Error occurs during communication with Mode 2, memory in this device is possible to destroy. In this case initialize memory of welding machine (or TIG filler) with following and set memory again.

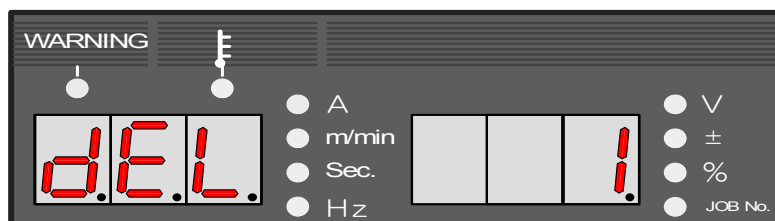
- How to initialize memory

Turn on the switch with pushing both [F] key of welding machine (or peripheral device) and [GAS CHECK] key ([FEED] key in TIG filler). "End End" is indicated on the panel, separate the key and turn off the power at once.

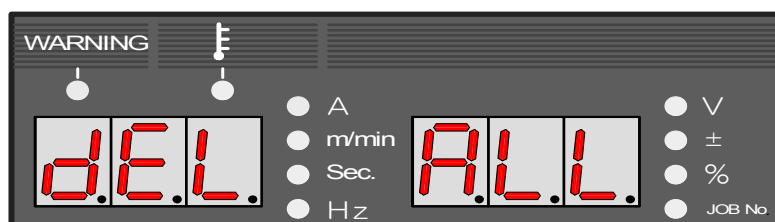


- How to initialize memory that saved memory

Turn on the switch with pushing both [LOAD] key and [SAVE] key. After turning on the power, "dEL" is indicated and separate the key.



Keep turning Parameter adjusting knob to anti-clock. "ALL " is indicated on the right side of the display and all memory become subject to erase.



"dEL" flashes by pushing [ENTER] key. All memories are erased by pushing [ENTER] key again. "End" is indicated after concluding to erase, turn off the power at once.

9. PARTS LIST

9.1 Parts list

- Please contact your dealer to order parts. (See the back cover for telephone and fax numbers, and mailing addresses.)

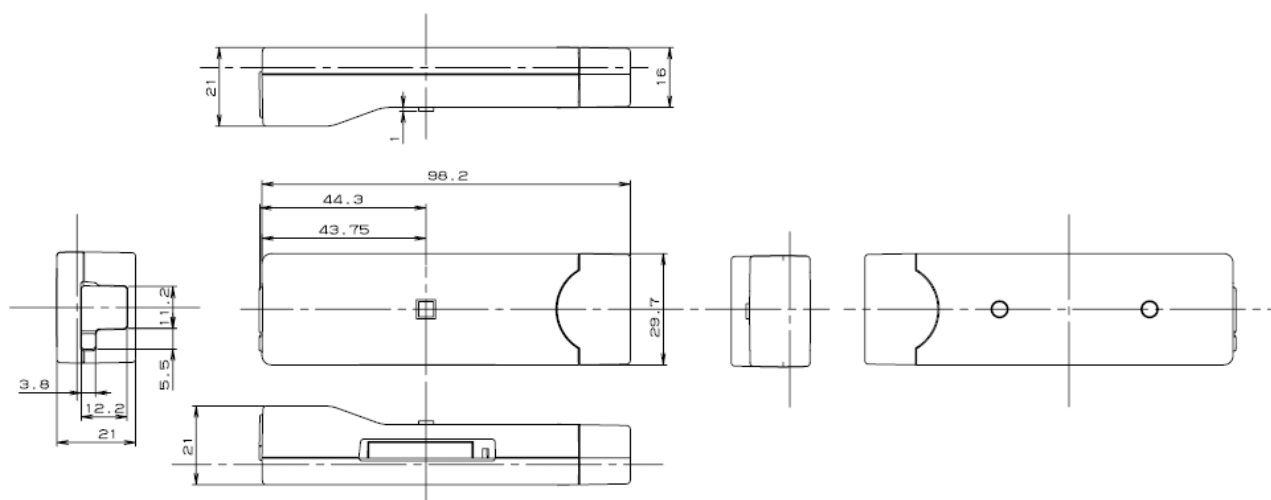
| Parts No. | Name | Specification | Q'ty | Remarks |
|-----------|------------|---------------|------|---------|
| E2475D00 | Cable | E2475D00 | 1 | |
| E2475F00 | AC adaptor | E2475F00 | 1 | |

10. SPECIFICATIONS

10.1 Specifications

| | |
|---------------------------------|--|
| Model | E2475 |
| Input voltage | DC5V 2A (Leased AC adaptor: AC100~240V 50/60Hz) |
| External dimensions (W x D x H) | 98.2×29.7×21.0mm |
| Mass | 37.2g |

10.2 External view



11. SERVICE AND SUPPORT

Please contact your local dealer for service. (See the back cover for telephone numbers, fax numbers, and mailing addresses.)

NOTE:

When contacting your dealer for service, you are required to provide the following information:

- Address
- Name
- Telephone number
- Product model
- Manufacture year
- Serial number
- Software version number
- Details of troubles

| | |
|-------------|--------------------|
| NAME: | SOFTWARE INSTALLER |
| MODEL: | E247 |
| DATE: | 2000 |
| SERIAL NO.: | E2475Y000000 |

Lower of case

