

NEW

プラズマ高能率溶接システム

High-efficiency plasma welding system

I形突合わせで1パス溶接が可能、加工費も大幅低減

One pass welding is available even if I-butt joint. Total production cost can be also dramatically reduced.

集中したプラズマアークでキーホール(貫通)1パスによる溶接が可能。中板では、TIGの多層盛りに比べ溶接時間を大幅に短縮。

Keyhole (penetration) by concentrated plasma arc. One pass welding is enabled. For medium thick plates, welding time will be drastically reduced compared with multi-layer welding by TIG.

薄板の高速溶接が可能

High speed thin plate welding is enabled.

たて継ぎ自動溶接装置との組み合わせで高速高品質溶接を実現。

Combination with the automatic vertical welding system realizes high speed and high quality welding.

適用分野

Applications

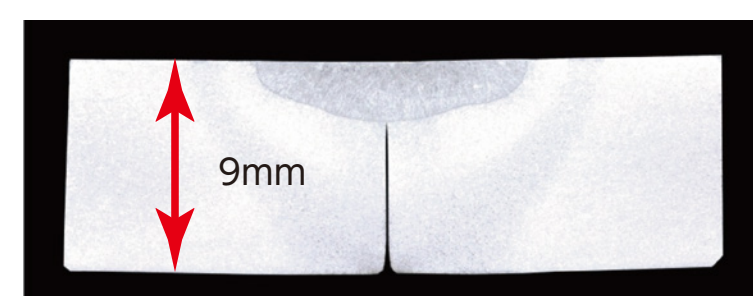
自動車排気系部品、造管、大型タンクなど。

Exhaust parts of automobiles, pipe manufacturing, large tanks, etc.

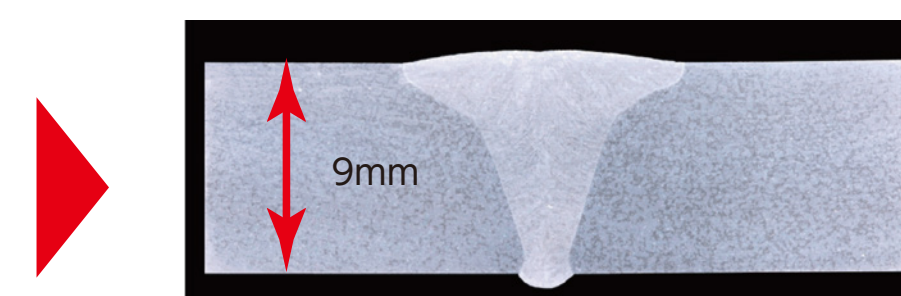
[I形突合せ ステンレス9mmの溶け込み深さの比較]

[Comparison of weld penetration depth for square butt weld, stainless steel 9mm]

1パス溶接が可能! Full penetration can be possible in one welding!



TIG溶接 300A 20cm/min
TIG welding 300A 20 cm/min



プラズマ溶接 300A 25cm/min
Plasma welding 300A 25 cm/min

構成品

Components

■溶接電源:WB-F300P ■送給装置:AFT-4211 ■ロボット:FD-V6
• Welding power source: WB-F300P • Feed system: AFT-4211 • Robot: FD-V6



亜鉛めっき鋼板 板厚:0.5mm 突合せ溶接
溶接電流:75A 溶接速度:2.5m/min

Galvanized sheet iron Plate thickness: 0.5 mm, Butt welding Welding current: 75A Welding speed: 2.5 m/min

構成品

Components

■溶接電源:WB-F300P ■トーチ:PTPW-2001 ■たて継ぎ自動溶接装置
• Welding power source: WB-F300P • Torch: PTPW-2001 • Automatic vertical welding system