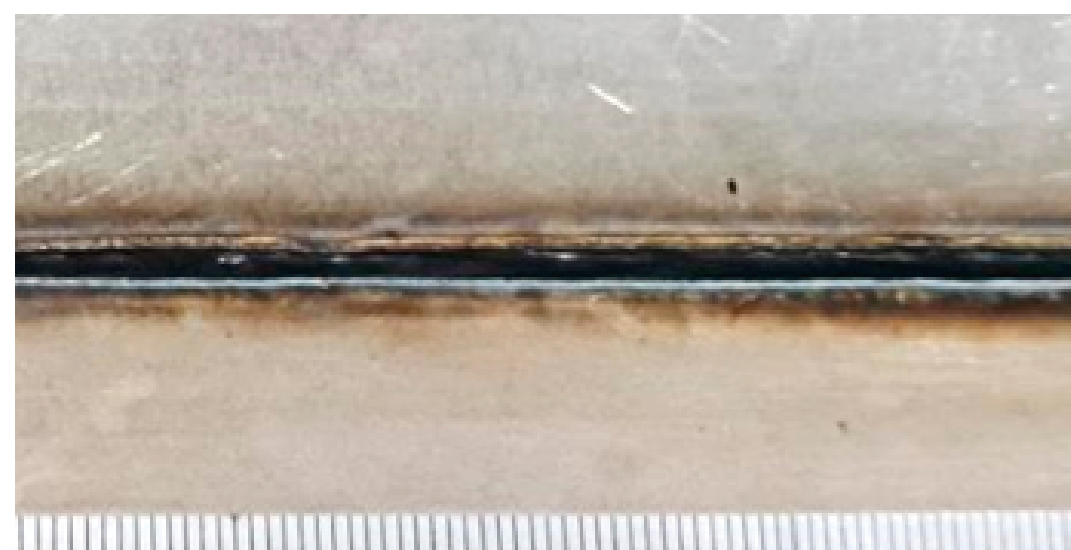
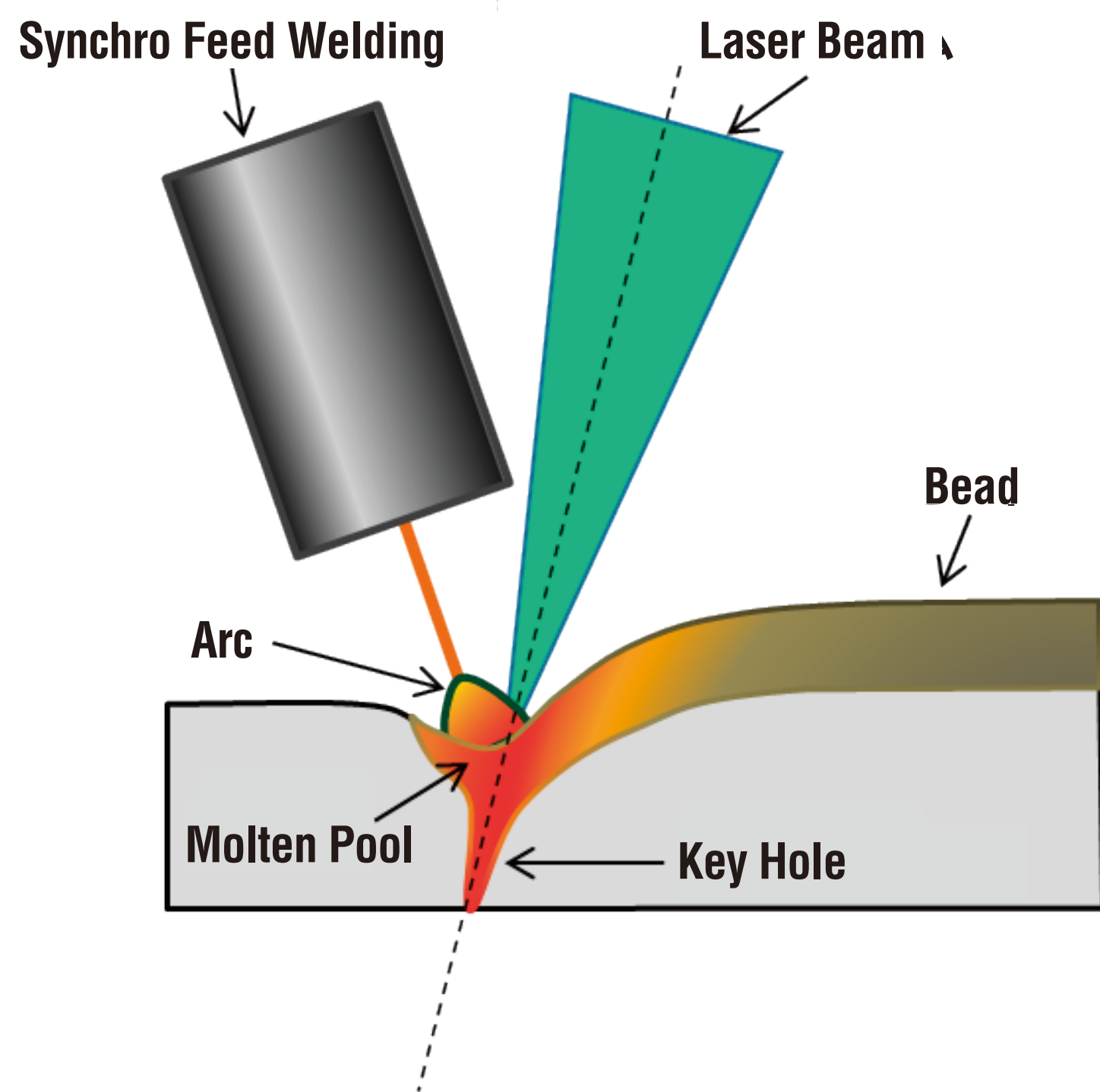




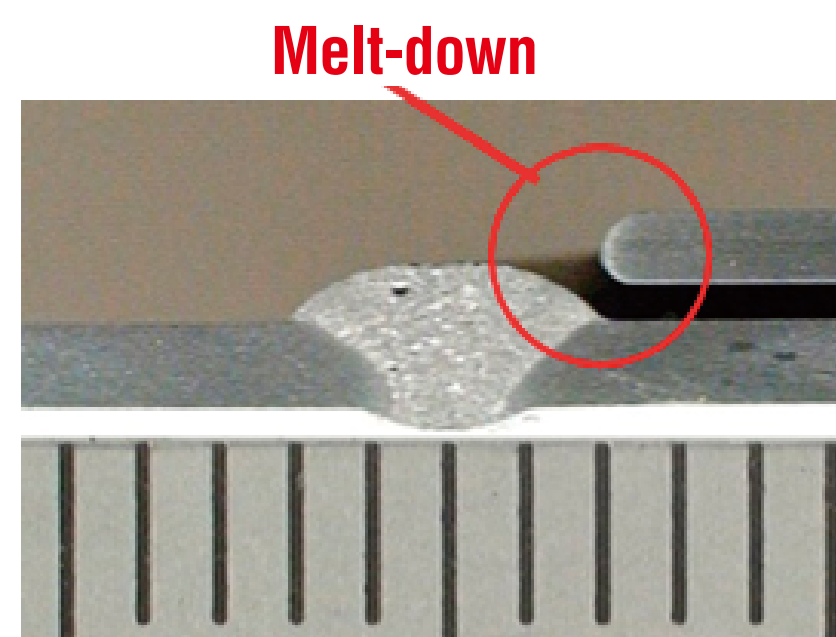
# Synchro-feed / Laser Hybrid Welding System

## Realized 6m/min high-speed welding

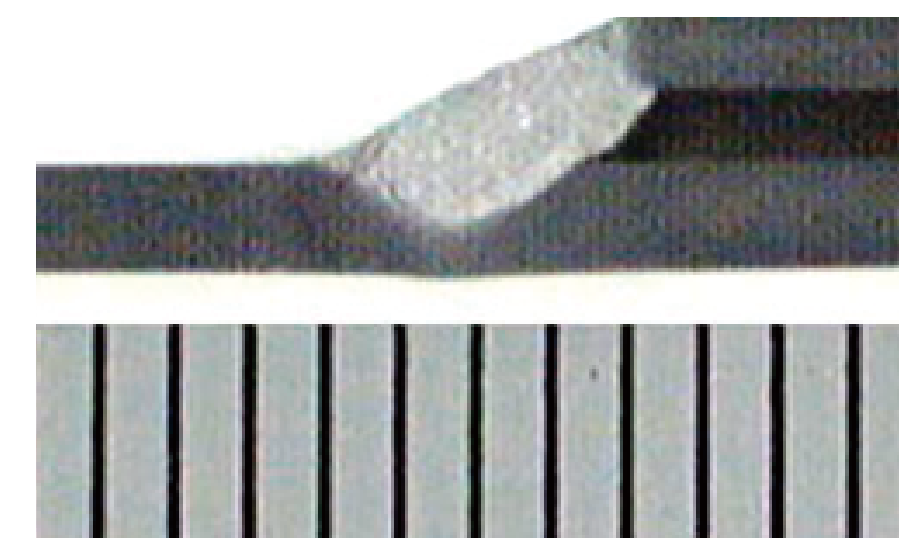
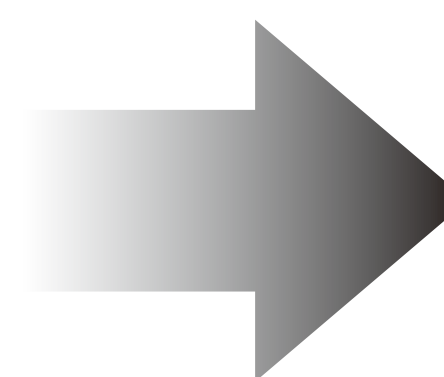


Joint : **Butt**  
Welding Current : **280A**  
Laser Output Power : **10kW**

## Avoid the melt-down with expanding of Gap Tolerance



Laser Welding



Laser Hybrid Welding

## Applicable Field

Underside, Body parts of Vehicles, etc.

## Realized Ultra Low Spatter Welding