

Good for outdoor welding and plated sheet steel welding

NEW

セルフシールド溶接 Welbeeシリーズ「WB-M500GS」

Self shield welding Welbee series "WB-M500GS"

溶接欠陥を防止

Welding defects will be prevented.

風のある環境下では、CO2溶接よりも溶接欠陥が少ない。
溶接作業時間が手棒の約50%短縮と高能率。

This welding causes less welding defects than CO2 welding under the windy environment. Welding is very efficient because the welding time is about half of manual welding.



鋼管杭の溶接施工事例

Steel pipe pile welding construction case

亜鉛めっき鋼板の高品質溶接を実現

High quality galvanized steel plate welding realized

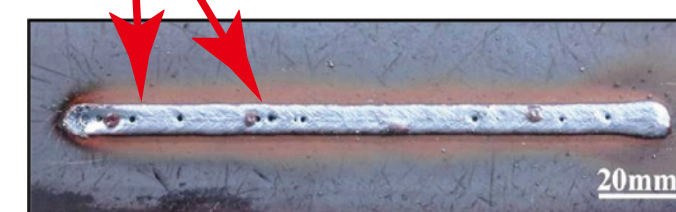
亜鉛めっき鋼板の溶接では、
ブローホールが発生しにくく、溶接品質を向上。

In welding of galvanized steel plates, it generates less blow holes, thus improving welding quality.

ブローホール発生
Generation of blow holes

風速 5m/sでの溶接結果

Welding result with the wind speed of 5 m/s



炭酸ガス溶接法
Carbon dioxide gas welding method



セルフシールド溶接法
Self-shielded welding method



Zn-Al-Mgめっき材の溶接
Welding of Zn-Al-Mg plate



溶融亜鉛めっき鋼板の溶接
Welding of galvanized steel plate

適用分野

Applications

鋼管杭、屋外の建築作業現場、
パイプライン、矢板、軽量鉄骨など。

Steel pipe piles, outdoor construction sites, pipe lines, piling boards, light-gauge steels, etc.

溶接電流: 250A アーク電圧: 20.5V 溶接速度: 60cm/min
Welding current: 250 A Arc voltage: 20.5 V Welding speed: 60 cm/min

構成品

Components

- 溶接電源: WB-M500GS ■送給装置: CMN-7402
- トーチ: WTNJ3510-SD
- Welding power source: WB-M500GS
- Feed system: CMN-7402 • Torch: WTNJ3510-SD